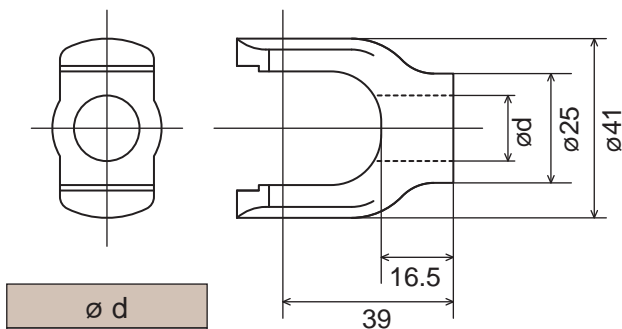


HJ TYPE Cold-Forged Steering Joint

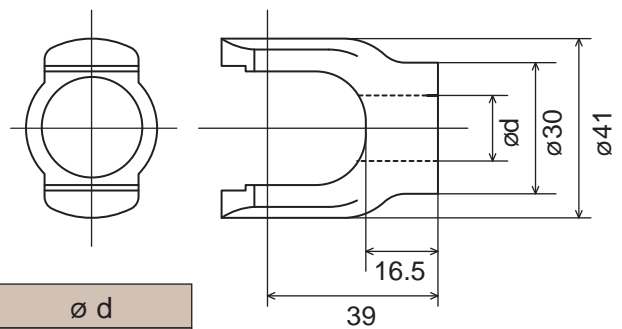
Yoke Welded Standard Dimensions

HCY1R



ϕd
$\phi 13.50^{+0.027}_0$
$\phi 15.23^{+0.05}_0$

HCY4R

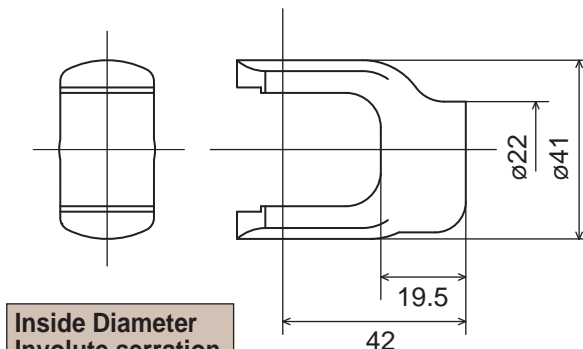


ϕd
$\phi 21.0^{+0.05}_0$
$\phi 23.6^{+0.07}_0$

Note ; The dimensions are our standard of forged yoke. Please be sure to inquire us for assembling or combination of the yokes. The shaft and welded yoke are combined by welding or pins.

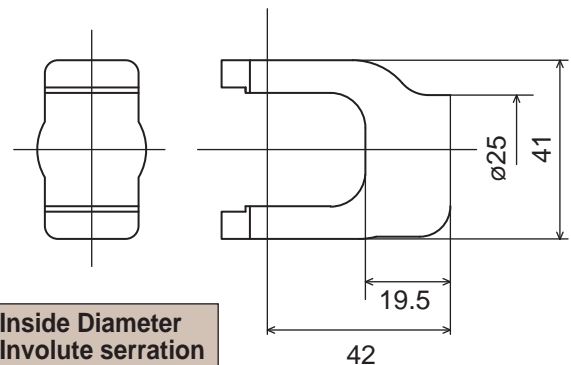
Yoke Bolts Standard Specifications

HCY1B



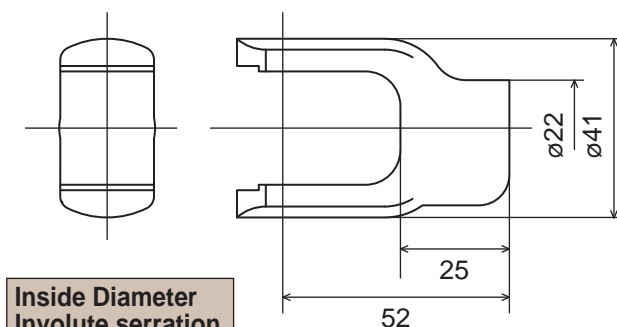
Inside Diameter Involute serration	
P.C.D	Teeth
14.174	30
15.367	36

HCY4B



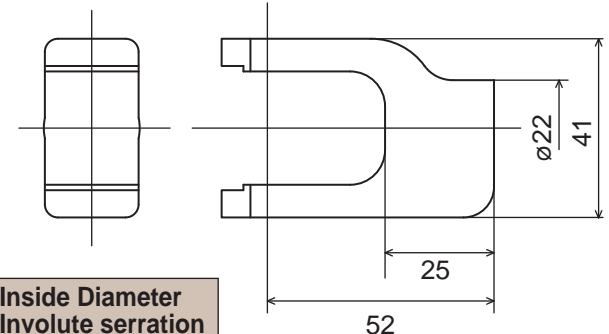
Inside Diameter Involute serration	
P.C.D	Teeth
16.200	36

HCY3B



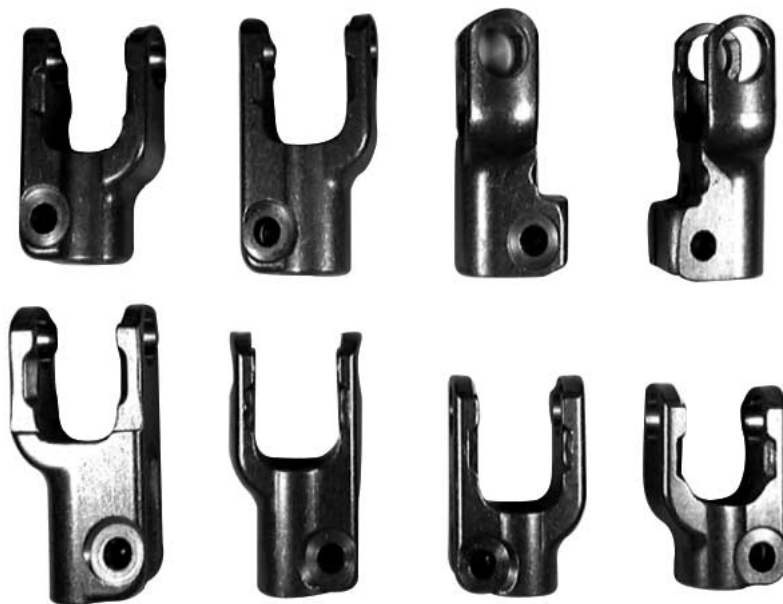
Inside Diameter Involute serration	
P.C.D	Teeth
14.400	32
15.367	36

HCY6B



Inside Diameter Involute serration	
P.C.D	Teeth
14.400	32

Yoke Bolts (High Rigidity & Wide Angle)



Combination Examples of Yoke Bolts



Combination of Yoke Bolts



Combination of Yoke Bolts



Combination of Yoke Bolts



Extension

- Note ;
1. Use locking bolt for bolt yoke of not less than strength section 7T.
 2. Apply 20N.m to bolt locking torque.
 3. Use welding or pin to connect shaft and round yoke.
 4. Be sure to inquire about combination, as the specifications shown in this catalog are.
Kyowa's basic specifications.