

Aurotek®

A Complete Solution from One Source

AUI SERIES

Fully-Automatic PCB Separator



→ Inheriting the excellent design of AUI series, the high-efficiency dual working table with automatic loading/unloading system, the fully-automatic PCB Separator AUI series is born.

In addition to the features of clean working, effective PCB separating and easy to operate, the AUI series is applicable to assorted sizes of PCB.

We provide flexible and customer-configurable options for different production need such as spindle and dust collecting system, and other specific functions requested by customers.

The AUI series is the closest to your production management requirement, the user-friendly operation interface, the cutting path simulation & optimization, and POKA YOKE processing control provides the customer a time cost-saving and production/material traceable solution.

Efficient
Accurate
Speedy
Yield Increasing

AUI 3000 / 4000 / 5000 SERIES

www.aurotek.com.tw

SPECIFICATION

MODEL NO.	AUI 3000 / 3000C	AUI 4000 / 4000C	AUI 5000 / 5000C
WORKING AREA	X:330 mm Y:350 mm	X:430mm Y:450mm	X:630 mm Y:550 mm
Working Table	2	2	1
PCB Thickness	0.8 ~ 3.0 mm		
PCB Component Height (Max.)	Upward: 15 mm / Downward: 35 mm		
Motion Control	7 Axes AC Servo Motors	7 Axes AC Servo Motors	6 Axes AC Servo Motors
Moving Speed	Standard: X, Y=1,000 mm/s; Z=750 mm/s; Carrier X=700 mm/s; Carrier Z=750 mm/s Maximum: X, Y=1,200 mm/s; Z=750 mm/s; Carrier X=700 mm/s; Carrier Z=750 mm/s		
Cutting Speed	0~100 mm/s		
Cutting Accuracy	±80 μm	±80 μm	±100 μm
Positioning Repeatability	±10 μm		
Cutting Modes	Linear, Circular, U-Curve, Arc, L-Curve		
Standard Bits	Ø 1.0 mm, Ø 1.2 mm, Ø 1.6 mm, Ø 2.0 mm		
Operating System	Windows 7		
Pneumatic Pressure	0.5/0.6 Mpa (5/6 Bar)		
Working Height	890 ~ 940 mm		
Dimensions (W*D*H)	1974*1120*1720 mm + Signal Light 561 mm	2374*1334*1720 mm + Signal Light 561 mm	2572*1583*1720 mm + Signal Light 561 mm
Net Weight (Approx.)	680 KGS	840 KGS	860 KGS
Vacuum Cleaner	5HP		
Standard Spindle	Standard: 4026, 265W, (Max.) 58,000 rpm, Torque: 4.5 Ncm Option 1: 4025DC-T, 470W, (Max.) 30,000 rpm, Torque: 15 Ncm Option 2: AP 008-ESD, 500W, (Max.) 80,000 rpm, Torque: 8.4 Ncm		
Standard Monitor	15" Touch Panel		
Power Supply	3 Phase AC220 V±5% 50 Hz/60 Hz, 4.0 kw		

Efficient

- A. High horsepower industrial dust-collectors
- B. Small dust-collecting duct designed for upward or downward dust extraction systems
- C. Duct is close to the milling area, removing dust at once while depaneling

Accurate

- A. KURODA high precision ball screw
- B. Panasonic servo motor
- C. Sycotec spindle
- D. Advantech industrial computer

- E. Aurotek motion control card
- F. Aurotek Vision System
- We guarantee: Cpk>=1.33
- Positioning Repeatability ±10 μm
- Cutting Accuracy ±80 μm

Speedy

- A. High-speed axis modules reaches up to (max.) 1200 mm/s
- B. Maximum cutting speed 100mm/s
- C. 2 parallel processing tables. Maximize production throughput while minimizes idle time
- D. Customized fixture and tools. Production changeover can be done in just a few seconds

Yield Increasing

Easy to use is a MUST.
We design machines for:

- A. Manageability
- B. Usability
- C. Safety
- D. Traceability

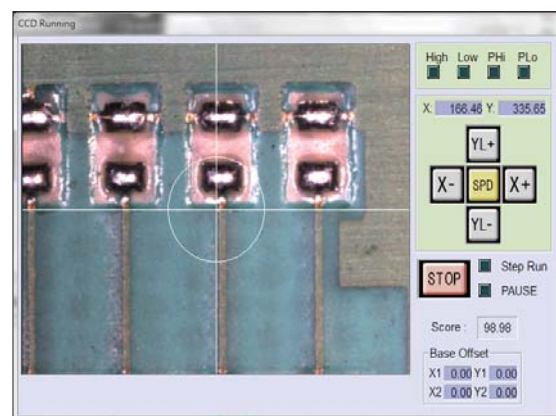
FEATURES

U seability	CCD Camera System	M anageability	Real-Time Production Info
	Cutting Route Simulation		Spindle & Bit Lifespan Management
	Cutting Route Optimization		User Account Management
	Bit-sectioning for Multiple Usage (0~9 Times)		System Backup Software
	Offline Programming Software *		Bit Diameter Detection *
	Spindle Rpm Digital Adjustment *		Specific Fixture Identification*
	Inlet Conveyor Width Auto-Adjustment *		Specific Nozzle Pad Identification *
	Output Flat Belt Conveyor *	S afety	Bit Sliding & Breaking Detection
	Rotatable Carrier *		Fiducial Mark Alignment
	Specific Fixture *		Air Ionizer System
Universal Loading/unloading system with Nozzle Module	T raceability	PCB Bow & Twist Checking	
Nozzle Pad *		CE Approval*	
		Production Traceability	
		Automatic Barcode(DMX) Reader *	
			MES Integration (by TCP/IP Socket) *
			UPS system for IPC*

* SOME OPTIONS CAN'T BE APPLIED TO SOME MODELS TOGETHER, PLEASE CONTACT US FOR FURTHER CONFIRMATION

Date	Time	L Product Name	R Product Name	Total Qty	Cycle Time(sec)
2018/9/7	09:22:51	Test-L	Test-R	251	6.14
2018/9/7	09:23:56	Test-L	Test-R	251	6.14
2018/9/7	09:25:38	Test-L	Test-R	251	6.14
2018/9/7	09:55:41	Test-L	Test-R	251	6.14
2018/9/7	09:56:08	Test-L	Test-R	251	6.14
2018/9/7	10:41:28	Test-L	Test-R	251	6.14
2018/9/7	10:56:48	Test-L	Test-R	251	6.14
2018/9/7	13:22:58	Test-L	Test-R	251	6.14
2018/9/7	13:23:00	Test-L	Test-R	251	6.14
2018/9/7	13:23:01	Test-L	Test-R	251	6.14
2018/9/7	13:23:03	Test-L	Test-R	251	6.14
2018/9/7	13:23:04	Test-L	Test-R	251	6.14
2018/9/7	13:23:05	Test-L	Test-R	251	6.14
2018/9/7	13:23:06	Test-L	Test-R	251	6.14
2018/9/7	13:23:19	Test-L	Test-R	251	6.14

Production Traceability



CCD Camera System



Bit Sliding & Breaking Detection



PCB Bow & Twist Checking

VACUUM CLEANER

YSF vacuum cleaner is designed for PCB Separator Series to collect the dust & scrap generated by router. High horse power motor & high efficiency fan to ensure the suction with excellent efficiency.

MODEL NO.	YSF-V553	YSF-V553 ZETA	YSF-V605
Dimensions(L*W*H)	665x635x1610 mm	780x780x1000 mm	780x665x1900 mm
Weight	195 KGS	170 KGS	230 KGS
Power supply	3 phase 50 Hz / 60 Hz 220 V		
	2.2 kw		3.7 kw
Motor power	3 HP		5 HP
Inlet wind speed	26 m/sec	27 m/sec	28 m/sec
Inlet wind capacity	28 m ³ /min	26 m ³ /min	40 m ³ /min
Inlet wind pressure	300 mm -Ag	180 mm -Ag	300 mm -Ag
Inlet Diameter	150 mm	125 mm	150 mm
Outlet Diameter	203 mm	150 mm	203 mm



Aurotek
A Complete Solution from One Source

Aurotek Corporation Headquarter

Address : 1F, No. 60, Jhouzih St. ,Neihu District, Taipei 114, Taiwan.
TEL : +886-2-8752-3311
FAX : +886-2-8752-3347
E-mail : info@aurotek.com
Website : <https://www.aurotek.com.tw/en>

Taoyuan Plant

Address : 1F, No.61, Lioufu Rd., Lujhu District, Taoyuan 338, Taiwan.
TEL : +886-3-322-3788, +886-3-212-1775
FAX : +886-3-322-0866, +886-3-322-0869
E-mail : info@aurotek.com

Taichung Office

Address :7F-8, No. 262, Sec. 2, He-Nan Rd., Si-Tun District, TaichungCity 407, Taiwan.
TEL : +886-4-2452-2822
FAX : +886-4-2451-0073
E-mail : info@aurotek.com

Tainan Office

Address : 7F, No. 573, Cing-Ping Rd., An-Ping District, TainanCity 708, Taiwan.
TEL : +886-6-293-4853
FAX : +886-6-293-4973
E-mail : info@aurotek.com

Aurotek (Shanghai) Inc.

Address : No. 936, Ji Min Tang Nan Rd., Huaqiao Economic Development Zone Kunshan, Jiangsu, 215332 China.
TEL : +86-512-5013-9099, +86-512-5013-9091 ~ 7
FAX : +86-512-5013-9098, +86-512-5013-9089
E-mail : sales@aurotek.com.cn
Website : <https://www.aurotek.com.cn>

Aurotek (Shanghai) Inc, Huanan Office.

Address :Shenzhen District Longhua new district east peace zhenhua 21 times plaza, room 706
TEL : +86-755-2919-5676
FAX : +86-755-2377-7037
E-mail : sales@aurotek.com.cn

Aurotek (Kunshan) Inc.

Address : No. 936, Ji Min Tang Nan Rd., Huaqiao Economic Development Zone Kunshan, Jiangsu, 215332 China.
TEL : +86-512-5797-1581
FAX : +86-512-5797-1583

Aurotek (Japan) Inc.

Address :2nd Fl., Akihabara-Seishin Bidg., 11-7-8 Kanda Suda-cho, Chiyoda-ku Tokyo 101-0041, Japan.
TEL : +81-3-5297-7028
FAX : +81-3-5297-7029
E-mail : info@aurotek.co.jp
Website : <https://www.aurotek.com.tw/jp>

Plenty Island (Thai) Co., Ltd.

Address : 3 Soi Charoenrat 10, Charoenrat Rd., Bangkok, Bangkhoraem, Bangkok 10120 Thailand.
TEL : +66-2-291-9933 (Automatic 8 Lines)
FAX : +66-2-291-2065
E-mail : jackson@plenty.co.th



AUROTEK CORPORATION

Copyright © 2019 Aurotek Corporation. All rights reserved.

CAT.2019/02/25



➔ 承襲AUO系列的優良設計，高效率的雙自動工作平台，搭配上全自動入出料輸送系統，誕生了全自動在線式AUI分板設備。AUI系列擁有乾淨、精準、快速、方便操作的特點外，全系列更適用於各種小型到大型的PCB連板。

此外，針對不同的生產需求，和椿提供更多彈性配置的PCB銑刀分板解決方案，如主軸、粉塵清除系統與其他高階選配方案，為您量身打造選擇需要的項目，帶來更高的成本效益。

AUI 系列最貼近您的生產管理需求，簡易的操作介面，切割路徑模擬&優化，作業流程防呆。一機同時擁有生產管理性、易用性、安全性、生產資料可溯性。

Efficient
Accurate
Speedy
Yield Increasing

AUI 3000 / 4000 / 5000 SERIES

產品規格

型號	AUI 3000 / 3000C	AUI 4000 / 4000C	AUI 5000 / 5000C
工作檯尺寸	X:330 mm Y:350 mm	X:430mm Y:450mm	X:630 mm Y:550 mm
工作檯數量	2	2	1
適用PCB板厚	0.8 ~ 3.0 mm		
PCB零件高度 (最大)	上: 15 mm / 下: 35 mm		
軸向運動控	7 Axes AC Servo Motors	7 Axes AC Servo Motors	6 Axes AC Servo Motors
驅動速度	額定: X, Y=1,000 mm/s; Z=750 mm/s; 搬運軸 X=700 mm/s; 搬運軸 Z=750 mm/s 最大: X, Y=1,200 mm/s; Z=750 mm/s; 搬運軸 X=700 mm/s; 搬運軸 Z=750 mm/s		
切割速度 (範圍)	0~100 mm/s		
切割精度	±80 μm	±80 μm	±100 μm
重複定位精度	±10 μm		
切割模式	直線, L形, U形, 弧形, 圓形		
標準銑刀規格	Ø 1.0 mm, Ø 1.2 mm, Ø 1.6 mm, Ø 2.0 mm		
電腦作業系統	Windows 7		
供給氣壓	0.5/0.6 Mpa (5/6 Bar)		
工作高度 (範圍)	890 ~ 940 mm		
設備尺寸 (W*D*H)	1974*1120*1720 mm + Signal Light 561 mm	2374*1334*1720 mm + Signal Light 561 mm	2572*1583*1720 mm + Signal Light 561 mm
機台淨重 (約)	680 KGS	840 KGS	860 KGS
集塵系統	5HP		
切割主軸	標準: 4026, 265W, (Max.) 58,000 rpm, Torque: 4.5 Ncm 選配1: 4025DC-T, 470W, (Max.) 30,000 rpm, Torque: 15 Ncm 選配2: AP 008-ESD, 500W, (Max.) 80,000 rpm, Torque: 8.4 Ncm		
標準顯示器	15吋觸控螢幕		
電源供應	3 Phase AC220 V±5% 50 Hz/60 Hz, 4.0 kw		

高效率 Efficient

- A. 高馬力的工業集塵機
- B. 上集塵/下集塵系統搭配極小化的集塵口
- C. 貼近加工部 · 加工時可立即且有效清除粉塵

精準 Accurate

- A. KURODA高精度螺桿
 - B. Panasonic伺服電機
 - C. Sycotec主軸
 - D. 研華工業電腦
 - E. 和椿運動控制卡
 - F. 和椿視覺系統
- 我們保證:
Cpk>=1.33
重複定位精度 ±10 μm
切割精度±80 μm

快速 Speedy

- A. 搭載高速軸控模組 · 驅動速度最快達 (最大) 1200 mm/s
- B. 切割速度最快每秒100mm
- C. 雙工作檯可極大化生產量 · 幾乎沒有閒置時間
- D. 客製化治具及工具 · 輕鬆快速完成換線作業

良率提高 Yield Increasing

操作簡單是我們設備
的特色 · 一機擁有:

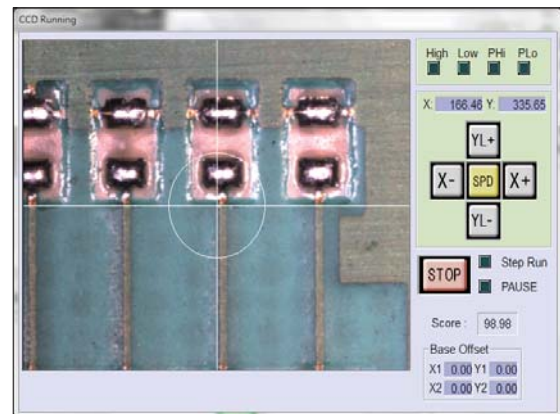
- A. 生產管理性
- B. 易用性
- C. 安全性
- D. 生產資料可溯性

產品特色

易用性	10倍工業相機切割路徑教導	管理性	即時生產資訊
	生產(切割路徑)模擬		主軸&銑刀使用壽命管理
	切割路徑優化		使用者權限管理
	銑刀分段使用 (0~9 次)		系統回復備份軟體
	離線切割路徑編程軟體 *		銑刀直徑偵測 *
	主軸轉速數位調整 *		專用治具辨識系統 *
	入料輸送寬度自動調整 *	專用吸嘴盤辨識系統 *	
	出料平皮帶輸送裝置	安全性	斷滑刀感測系統
	可旋轉移載輸送頭 *		基準點定位
	專用治具 *		靜電消除器
萬用入出料吸嘴模組	PCB翹板偵測系統 *		
專用吸嘴盤 *	生產可溯性	符合CE 安全認證 *	
備註: * 選配功能如需互相搭配, 需和和椿科技進行技術討論			

Date	Time	L Product Name	R Product Name	Total Qty	Cycle Time(sec)
2018/9/7	09:22:51	Test-L	Test-R	251	6.14
2018/9/7	09:23:56	Test-L	Test-R	251	6.14
2018/9/7	09:25:38	Test-L	Test-R	251	6.14
2018/9/7	09:55:41	Test-L	Test-R	251	6.14
2018/9/7	09:56:08	Test-L	Test-R	251	6.14
2018/9/7	10:41:28	Test-L	Test-R	251	6.14
2018/9/7	10:56:48	Test-L	Test-R	251	6.14
2018/9/7	13:22:58	Test-L	Test-R	251	6.14
2018/9/7	13:23:00	Test-L	Test-R	251	6.14
2018/9/7	13:23:01	Test-L	Test-R	251	6.14
2018/9/7	13:23:03	Test-L	Test-R	251	6.14
2018/9/7	13:23:04	Test-L	Test-R	251	6.14
2018/9/7	13:23:05	Test-L	Test-R	251	6.14
2018/9/7	13:23:06	Test-L	Test-R	251	6.14
2018/9/7	13:23:19	Test-L	Test-R	251	6.14

生產歷程記錄



10倍工業相機切割路徑教導



斷滑刀感測系統



PCB 翹板偵測系統

工業用集塵設備

YSF 系列集塵器是專門用來收集 PCB 切割機切割過程中的粉塵、碎片。內部使用高馬力電機及高效率風扇，集塵效率高，並可使切割中之粉塵附著產品情況減少到最低。

型號	YSF-V553	YSF-V553 ZETA	YSF-V605
尺寸 (寬 x 深 x 高)	665x635x1610 mm	780x780x1000 mm	780x665x1900 mm
重量	195 KGS	170 KGS	230 KGS
電源供應	3 phase 50 Hz / 60 Hz 220 V		
	2.2 kw		3.7 kw
馬達	3 HP		5 HP
進風入口風速	26 m/sec	27 m/sec	28 m/sec
進風量	28 m ³ /min	26m ³ /min	40 m ³ /min
進風入口風壓	300 mm-Ag	180 mm-Ag	300 mm-Ag
進風口直徑	150 mm	125 mm	150 mm
出風口直徑	203 mm	150 mm	203 mm



Aurotek
A Complete Solution from One Source

和椿科技股份有限公司 / 台北總公司

地址：台北市內湖區洲子街 60 號 1 樓
電話：(02)8752-3311
傳真：(02)8752-3347
客戶服務專線：0800-013397
E-mail：info@aurotek.com
網址：https://www.aurotek.com.tw

桃園廠

地址：桃園市蘆竹區六福路 61 號
電話：(03)322-3788, (03)212-1775
傳真：(03)322-0866, (03)322-0869
E-mail：info@aurotek.com

台中營業所

地址：台中市西屯區河南路二段 262 號 7 樓之 8
電話：(04)2452-2822
傳真：(04)2451-0073
E-mail：info@aurotek.com

台南營業所

地址：台南市安平區慶平路 573 號 7F
電話：(06)293-4853
傳真：(06)293-4973
E-mail：info@aurotek.com

和椿自動化 (上海) 有限公司

地址：江蘇省昆山市花橋經濟開發區雞鳴塘南路 936 號
電話：+86-512-5013-9099, +86-512-5013-9091 ~ 7
傳真：+86-512-5013-9098, +86-512-5013-9089
E-mail：sales@aurotek.com.cn
網址：https://www.aurotek.com.tw/cn

華南辦公室

地址：深圳市龍華新區和平東路 21 號 振華時代廣場 706 室
電話：+86-755-2919-5676
傳真：+86-755-2377-7037
E-mail：sales@aurotek.com.cn

和椿科技 (昆山) 有限公司

地址：江蘇省昆山市花橋經濟開發區雞鳴塘南路 936 號
電話：+86 512 5797-1581
傳真：+86 512 5797-1583

Aurotek (Japan) Inc.

郵便 101-0041 東京都千代田區神田須田町 1 丁目 7 番 8 號
電話：+81-3-5297-7028
傳真：+81-3-5297-7029
E-mail：info@aurotek.co.jp
網址：https://www.aurotek.com.tw/jp

Plenty Island (Thai) Co., Ltd.

地址：3 Soi Charoenrat 10, Charoenrat Rd.,
Bangkhlo, Bangkhlorlaem,
Bangkok 10120 Thailand.
電話：+66-2-291-9933 (Automatic 8 Lines)
傳真：+66-2-291-2065
E-mail：jackson@plenty.co.th
網址：http://www.plenty.co.th



AUROTEK CORPORATION

Copyright © 2019 Aurotek Corporation. All rights reserved.

CAT.2019/02/25